



# Welcome to your SKYRIZI treatment

This booklet is only for people prescribed SKYRIZI. It does not replace the Consumer Medicine Information (CMI) or speaking with your healthcare professional. Please ensure you have read the [CMI](#) before using SKYRIZI.



Help stay on track with the dosage wheel by scanning the QR code.

# Welcome to SKYRIZI



This booklet will provide you with some of the key information you might want to know. Even when you feel like you are up and running, you can always refer back to it if you have a question.



# Key SKYRIZI points you need to know

## Have you set up reminders?



Staying on track with treatment milestones is vital to the management of your condition and to your continued access to SKYRIZI (as assessed by your specialist). That's why it is important to set reminders for future:

- Injections
- Appointments
- Prescription collections

## Have you scheduled your next appointment?



Know when you next need to see your specialist and come prepared with any questions you have.

## Do you know how and when to inject SKYRIZI?



AbbVie Care offers a range of support to complement your SKYRIZI treatment, including injection support with a registered nurse. To enrol, visit [abbviecare.com.au](https://www.abbviecare.com.au) and enter the access code 'myjourney', or the **last 4 digits of the barcode** on your SKYRIZI box.



After your first dose, you will have your second dose 4 weeks later, and then a dose every 12 weeks after that.



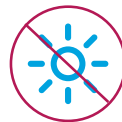
Remember that each SKYRIZI dose is given as **one** 150 mg injection under your skin using a pre-filled Pen.

## Do you know how to store and transport SKYRIZI?

Store SKYRIZI in a refrigerator (2°C to 8°C). If needed, you may also store a SKYRIZI pre-filled Pen **one time** out of the refrigerator (up to a maximum of 25°C) for up to 24 hours in the original packaging. If unopened and stored below 25°C for less than 24 hours, you may return the pre-filled Pen to the refrigerator.



**Do not freeze.**



**Keep in the original packaging to protect from light.**



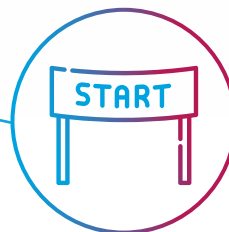
**Keep where young children cannot reach it.**

# Contents

Welcome to SKYRIZI.....	3
Key SKYRIZI points you need to know.....	4



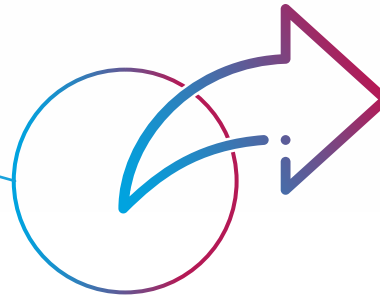
<b>AN INTRODUCTION TO SKYRIZI.....</b>	<b>8</b>
About SKYRIZI.....	8



<b>BEFORE YOU START SKYRIZI.....</b>	<b>10</b>
What you may expect from SKYRIZI treatment .....	10
What you should know before you use SKYRIZI .....	12



<b>WHILE YOU USE SKYRIZI</b> .....	<b>13</b>
Storing SKYRIZI .....	13
How often to use SKYRIZI .....	14
How to inject SKYRIZI .....	15
Some side effects to watch out for .....	16
Some points to tell healthcare professionals .....	17



<b>MOVING FORWARD WITH SKYRIZI</b> .....	<b>18</b>
Transporting and travelling with SKYRIZI .....	18
Where to go for more help or information .....	19
With AbbVie Care you are not alone .....	21





# About SKYRIZI

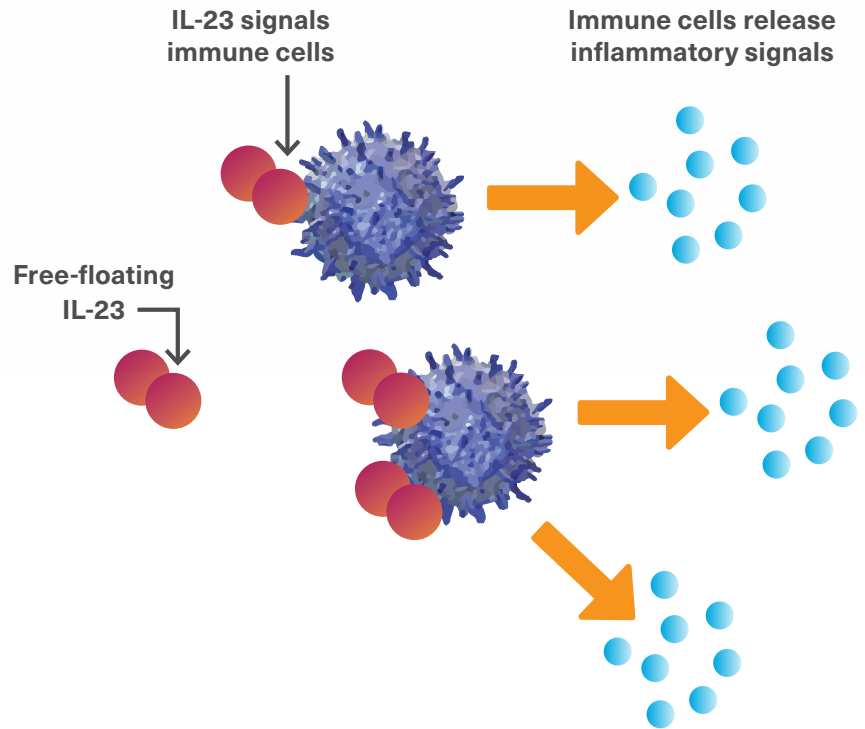
## Why your specialist prescribed this medicine

SKYRIZI is a prescription medicine used to treat moderate to severe plaque psoriasis and active psoriatic arthritis in adults. These are inflammatory conditions that affect the skin and nails. In patients with psoriatic arthritis, inflammation also affects the joints.

Ask your specialist if you have any questions about why this medicine has been prescribed for you.

## How SKYRIZI works on your condition

SKYRIZI contains the active ingredient risankizumab, which is a type of protein called a monoclonal antibody. It works by stopping a protein in the body called interleukin-23 (or IL-23), which causes inflammation.

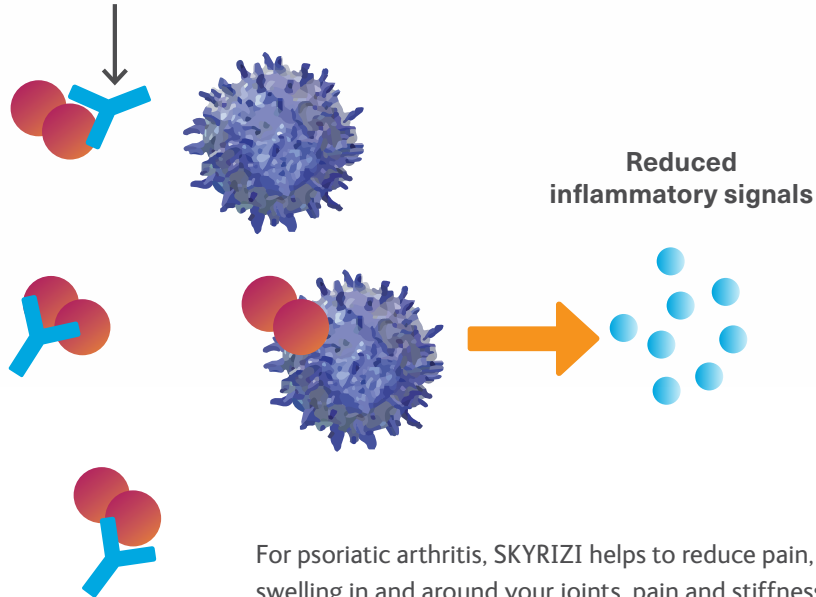




IL-23 is a protein found at elevated levels in people with psoriasis and psoriatic arthritis, which can signal your immune cells to release inflammatory signals and cause symptoms such as burning, itching, pain, redness and scaling.

SKYRIZI binds to IL-23, so it cannot activate and cause inflammation. This helps to reduce the signs and symptoms of your condition. For psoriasis, this helps to improve skin clearance and the appearance of nails. It also reduces symptoms of plaque psoriasis such as burning, itching, pain, redness and scaling.

SKYRIZI attached  
to IL-23



For psoriatic arthritis, SKYRIZI helps to reduce pain, stiffness and swelling in and around your joints, pain and stiffness in your spine, psoriatic skin rash, psoriatic nail damage and it may limit damage to the bone and cartilage in your joints.

SKYRIZI is not a cure for plaque psoriasis or psoriatic arthritis, so it is important that you continue this medicine as prescribed by your specialist, even if you are feeling well.



# What you may expect from SKYRIZI treatment

## How fast will you see improvement in your symptoms?

Some people can see a difference in their symptoms after 4 weeks of treatment (4 weeks after your first dose), others may need to wait longer. If you stop treatment, or miss any doses, your symptoms may come back. Your doctor will conduct an assessment of your symptoms after at least 12 weeks of SKYRIZI treatment to determine your response.<sup>1,2</sup>

## How will your specialist be involved in your ongoing treatment eligibility?

SKYRIZI is a specialised medicine and Medicare is required to check that you are eligible for PBS-subsidised treatment before they approve your prescription. Your specialist will continue to make sure you have shown improvement in your symptoms. They will assess your skin using a scale called the Psoriasis Area and Severity Index (PASI). This is a numerical scale that measures how severe your psoriasis is and how much of your body is affected.<sup>3</sup>

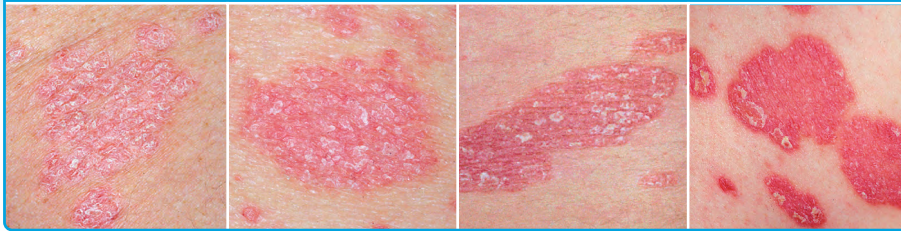


Your specialist will need to highlight the exact areas of your body affected by psoriatic plaques, and then score their severity based on three factors:

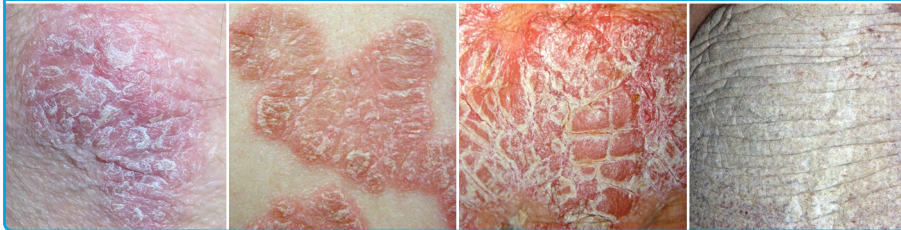
1. Gordon KB *et al.* *Lancet* 2018;392(10148):650–661. 2. SKYRIZI Product Information. 3. Australian Government. Severe chronic plaque psoriasis - continuing PBS authority application form (PB113). Available at [servicesaustralia.gov.au/pb113](https://servicesaustralia.gov.au/pb113) Accessed: February 2024. 4. Fredriksson T, Pettersson U. *Dermatologica* 1978;157(4):238–44. 5. DermNet NZ. PASI score. Available at [dermnetnz.org/topics/pasi-score/](https://dermnetnz.org/topics/pasi-score/) Accessed: February 2024. 6. Fadzil MA *et al.* *Int J Biomed Biol Eng* 2010;4(3):75–81.

## BEFORE YOU START SKYRIZI

### • Redness (erythema)<sup>4,5</sup>



### • Thickness<sup>5,6</sup>



### • Scaling<sup>4,5</sup>



**Do not stop using SKYRIZI without talking to your doctor first.**

If you stop treatment, or miss any doses, your symptoms may come back, and it may affect your ongoing access to subsidised SKYRIZI.<sup>3</sup> That is why it is important you use SKYRIZI exactly as your specialist directed you.



# What you should know before you use SKYRIZI

## Important safety information

### ✘ Do not use SKYRIZI

- If you are allergic to the active ingredient of SKYRIZI (risankizumab) or any of the other ingredients of this medicine (listed in the Product details section of the Consumer Medicine Information).
- If you have an active infection which your doctor thinks is important.
- After the expiry date printed on the pack.
- If the packaging is torn or shows signs of tampering. If your packaging shows signs of tampering or damage, please contact AbbVie, the manufacturer of SKYRIZI, on 1800 043 460.

### ! Warnings and precautions

Talk to your specialist before and during the use of SKYRIZI if:

- You currently have an infection or if you have an infection that keeps coming back.
- You have or have had tuberculosis.
- You have recently received or plan to receive an immunisation (vaccine).

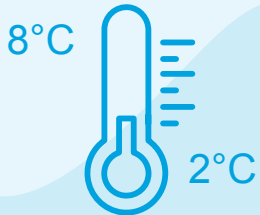
**You should not be given certain types of vaccines while using SKYRIZI. Let your doctor know that you are using SKYRIZI before any vaccinations.**

**Tell your doctor if you are pregnant or plan to become pregnant or are breastfeeding.** If you are pregnant, think you may be pregnant or are planning to have a baby, ask your doctor for advice before using this medicine. This is because it is not known how this medicine will affect the baby. If you become pregnant while using SKYRIZI, tell your doctor immediately.



## Storing SKYRIZI

WHILE YOU USE  
SKYRIZI



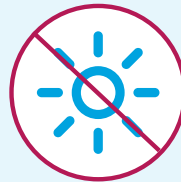
Store SKYRIZI in a refrigerator between **2°C to 8°C**.

If needed, you may also store a SKYRIZI pre-filled Pen **one time** out of the refrigerator (up to a maximum of 25°C) for up to 24 hours in the original packaging. If unopened and stored below 25°C for less than 24 hours, you may return the pre-filled Pen to the refrigerator.

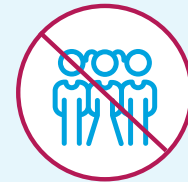
You can access travel tools by enrolling in AbbVie Care. See the back of this booklet for instructions.



Do not  
freeze.



Keep in the original packaging  
to protect from light.



Keep where young children  
cannot reach it.



## How often to use SKYRIZI

Each SKYRIZI dose is 150 mg, given as one injection under your skin using a pre-filled Pen. After your first dose, you will have the next dose four weeks later, and then every 12 weeks after that.



dose = 1x 150mg Pen

Initiation doses

Week 0

Week 4

Maintenance dosing every 12 weeks

Week 16

Week 28

Week 40

Week 52

### What if you miss a dose?

You'll need to inject your SKYRIZI on time every 12 weeks, exactly as prescribed by your doctor. If you forget to use SKYRIZI, inject a dose as soon as you remember. Talk to your doctor if you are not sure what to do. Do not stop using SKYRIZI without talking to your doctor first. If you stop treatment, your symptoms may come back, and it may affect your ongoing access to subsidised treatment.






# How to inject SKYRIZI


Scan the QR codes below to watch the step-by-step injection training video or access the step-by-step injection instructions for the pre-filled Pen.



Step-by-step injection video



Step-by-step injection instructions



## Enrol in AbbVie Care today

AbbVie Care is a patient support program that not only provides you with treatment support, but also helps to improve your overall wellbeing. To access this support all you need to do is enrol in the program by:

Scanning the **QR code**



Visiting **[abbviecare.com.au](http://abbviecare.com.au)**

Enter the access code:

or the last **4 digits of the barcode** on your SKYRIZI box.







## Some side effects to watch out for

All medicines can have side effects. Sometimes they are serious, most of the time they are not.



**Please talk to your specialist or get medical help immediately if you have symptoms of a serious infection, including:**

- Fever, flu-like symptoms, night sweats.
- Feeling tired or short of breath, cough which will not go away.
- Warm, red and painful skin, or a painful skin rash with blisters.

**Your specialist will decide if you can keep using SKYRIZI.**



**Tell your specialist if you notice any of the following and they worry you:**

- Upper respiratory tract infections with symptoms such as a sore throat and stuffy nose.
- Feeling especially tired.
- Fungal skin infection.
- Injection site reactions.
- Headache.
- Small raised red bumps on the skin.



Tell your specialist if you notice anything that is making you feel unwell as other side effects not listed above may also occur in some people.



# Some points to tell healthcare professionals



Tell your doctor or pharmacist if you are taking any other medicines, including any that you get without a prescription.



You should not receive a live vaccine while using SKYRIZI. Talk to your doctor, pharmacist or nurse before receiving any vaccination while using SKYRIZI.



Tell any other doctors, dentists, and pharmacists who treat you that you are using SKYRIZI. Fill in and use the Important information wallet card for this purpose (provided with a Welcome kit when you enrol into AbbVie Care). You should carry it at all times.



If you become pregnant while using SKYRIZI, tell your doctor immediately.

## IMPORTANT INFORMATION For Healthcare Professionals

This person is taking an immunosuppressive biologic agent (IL-23 blocker) called SKYRIZI® (risankizumab)

- If this person develops fever, infection or any unexplained illness, or if you have any concerns, please call their specialist below.
- This person should not receive any live vaccines. Refer to their specialist.

Dr name:

Phone:

For full prescribing information contact AbbVie Medical Information, AbbVie Pty Ltd, Mascot NSW 2020 or call 1800 048 466.

## I am on SKYRIZI® (risankizumab) therapy

My name:

It is important to carry this card with you, and always:

1. Show this card to any doctor, dentist, pharmacist or other healthcare person who may be treating you.
2. Ensure your family/friends know to give this card to a doctor if you become ill.
3. Contact your doctor if you are feeling generally unwell.
4. Call your specialist if you have questions about SKYRIZI®.

May 2019

AU-ABBV-190115 ABBV1174



# Transporting & travelling with SKYRIZI

## Keep your medicine cold

Keep SKYRIZI between 2°C to 8°C while transporting it. If needed, you may store SKYRIZI 150 mg pre-filled Pen one time out of the refrigerator, up to a maximum of 25°C and for up to 24 hours in the original packaging to protect from light.

### Long trips or travelling overseas<sup>1,2</sup>

Here are some things for consideration when you go on long trips:

- When traveling domestically, take your SKYRIZI prescriptions with you and phone ahead to a pharmacist at your destination to arrange dispensing of your SKYRIZI.
- Always discuss travel plans with your prescribing specialist.
- Check with the embassy, high commission or consulate of the country you intend to visit that SKYRIZI is legal there.
- Carry a letter from your specialist or doctor stating that this medicine is for your own personal use, detailing what your medicine is, how it is administered, how much you will be using and the necessity of carrying Pens on board an aircraft.
- Check with your airline to see if you will be able to carry your medicine through airport security.
- For more information on travelling with specialised medicines, go to [smarttraveller.gov.au](https://www.smarttraveller.gov.au).



Remember to talk to your doctor, pharmacist or nurse before getting any travel vaccines, as you should not be given live vaccines while you are using SKYRIZI.

Join AbbVie Care for travel tools to transport your SKYRIZI on short or long trips. See page 20 to learn more.

1. Australian Government. How to manage your PBS medicine overseas. Available at [servicesaustralia.gov.au/how-to-manage-your-pbs-medicine-overseas?context=22016](https://servicesaustralia.gov.au/how-to-manage-your-pbs-medicine-overseas?context=22016) Accessed: February 2024. 2. Therapeutic Goods Administration. Leaving Australia. Available at [tga.gov.au/leaving-australia](https://tga.gov.au/leaving-australia). Accessed: February 2024.



# Where to go for more help or information

## What if you use too much SKYRIZI (overdose)?

If you have used more SKYRIZI than you should, or the dose has been given sooner than prescribed, talk to your specialist.

.....

**Immediately telephone your doctor or the Poisons Information Centre (13 11 26) for advice, or go to the Emergency Department at the nearest hospital, if you think that you or anyone else may have used too much SKYRIZI. Do this even if there are no signs of discomfort or poisoning.**

.....

You may need urgent medical attention.

## AbbVie Medical Information

If you cannot get in touch with your specialist, and the query is not regarding medical advice, contact AbbVie Medical Information:



**1800 043 460**

(9.00 am–5.00 pm AEST Mon–Fri)



**[medinfoanz@abbvie.com](mailto:medinfoanz@abbvie.com)**



## Visit these websites

**Let Me Be Clear** – a digital platform that delivers support and empowerment tools for people living with psoriasis.

**[letmebeclear.com.au](http://letmebeclear.com.au)**

**Psoriasis Australia** – aims to provide up-to-date, relevant and easy-to-understand information and support to those affected by psoriatic disease. You can connect to a welcoming community in their private Facebook support group.

**[psoriasisaustralia.org.au](http://psoriasisaustralia.org.au)**

**[info@psoriasisaustralia.org.au](mailto:info@psoriasisaustralia.org.au)**

**MyPsA** – Developed by Arthritis Australia, MyPsA aims to help people with psoriatic arthritis (PsA), and their friends and families, to understand the condition, how to manage it and where to access support.

**[mysoriaticarthritis.org.au](http://mysoriaticarthritis.org.au)**



## Watch these videos



Welcome to SKYRIZI



How to inject SKYRIZI

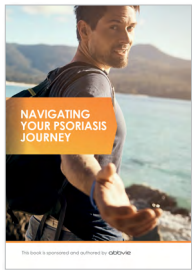


Understanding biologics



## Read these booklets

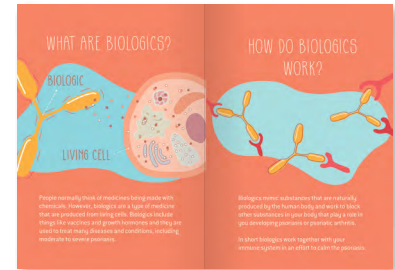
To request a free print copy of the following resources please call AbbVie Medical Information on 1800 043 460



*Navigating Your Psoriasis Journey* booklet



*Making Sense of Biologics*





# AbbVie Care is here to support you

AbbVie Care complements the care and support you receive from your specialist. By enrolling in the AbbVie Care program you will get access to comprehensive support and practical solutions to help support you on your treatment journey. Discover all the services and resources available to you.





# Your AbbVie Care support



Visit AbbVie Care for more information – [abbviecare.com.au](https://www.abbviecare.com.au)  
See back page for instructions to enrol



Call us at – **1800 222 843**



Email us at – [support@abbviecare.com.au](mailto:support@abbviecare.com.au)



## **AbbVie Medical Information – 1800 043 460**

- Unsuccessful injections
- Temperature excursions
- Product enquiries in line with the Consumer Medicine Information





# It's easy to enrol in AbbVie Care

Simply do one of the below to get started:

## Scan QR code



## Visit [abbviecare.com.au](http://abbviecare.com.au)



Enter the access code: **myjourney**  
or the last **4 digits of the barcode** on  
your SKYRIZI box.



SKYRIZI has both benefits and risks. Always use SKYRIZI according to your doctor's advice. For more information, please refer to the Consumer Medicine Information (CMI) and if you have any questions, please contact your healthcare professional. The CMI is available from your pharmacist, online at [abbvie/au-sky-cmi](http://abbvie/au-sky-cmi) or by calling AbbVie Pty Ltd.

AbbVie® and AbbVie Care® are registered trademarks of AbbVie Inc. and SKYRIZI® is a registered trademark of AbbVie Biotechnology Ltd. AbbVie Pty Ltd, ABN 48 156 384 262, Mascot NSW 2020. Medical information phone: 1800 043 460. [www.abbvie.com.au](http://www.abbvie.com.au). AU-IMMD-220025. SKY-003258-01. SSW. Date of preparation: March 2024.

